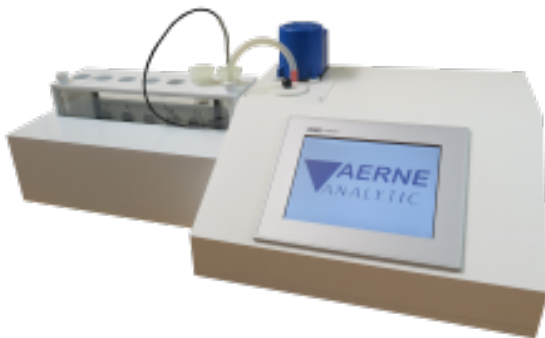


Glass Density Tester

Application:

The density of glass depends on its chemical composition and is therefore an important indicator for the stability of the glass production. With the Density Tester the physical density of up to six glass samples can be determined at the same time with high precision. The measurement can be performed within a few hours. The Density Tester is therefore a simple and compact instrument for modern quality assurance and production monitoring. The density of the glass samples is determined with the Settling Method according to M. A. Knight. Up to four glass samples of the same probe are inserted into each test tube together with an additional reference sample, whose density is determined according to Archimedes' principles.

Type: Glass Density Tester 2.0 (FULLAUTOMATIC)



Scope of delivery:

- six test tubes with high density liquid (bromnaphthaline/ tetrabromethane-mixture) for six glass samples
- waterbath with circulating pump for tempering the test tubes
- regulated heating with overheating safeguard of the waterbath

- heat exchanger with cooling-water connection (regulated via solenoid valve) to reduce the temperature of the waterbath
- PT-100 transmitter with graduation by 1/10 degree divisions and 12 Bit A/D converter to measure the temperature of the density liquid
- six maintenance-free, self-calibrating infrared-light barriers with ambient light filters and 8 Bit A/D converter for measurement recording
- electronics for control of the measuring process and analysis of the measuring results
- control panel with foil keyboard and background lighted LCD display for in and output of measuring parameters and results
- parallel interface for printing the measuring results

Technical data:

| | |
|-----------------------------|--|
| Housing: | PVC, white |
| Heating: | max. 125W |
| Circulating pump: | 35 W |
| Tempering medium: | distilled water |
| Density liquid: | Mixture out of 1-bromnaphtalin and 1, 1, 2, 2-tetrabromethan |
| Measuring range: | approx. 1,5 bis 2,9 g/cm ³ |
| Messgenauigkeit: | ± 0,0002 g/cm ³ |
| Messzeit: | typ. 2 h, min. 1 h |
| Sample size: | approx. 5 bis 10 mm edge length |
| Power supply: | 230 V / 50 Hz |
| Ambient temperature: | approx. 20 bis 30°C |
| Dimensions: | 365mm depth, 630mm width, 300mm height |
| Gewicht: | ca. 25kg |

Order details:

Order No. ADT-2.0

Type: Glass Density Tester (SEMIAUTOMATIC)

**Scope of delivery:**

- six test tubes with high density liquid (bromnaphthaline/ tetrabromethane-mixture) for six glass samples
- fluorescent screen for background lighting of the test tubes
- waterbath with circulating pump for controlled tempering the test tubes, respectively samples
- two windows to control the waterbath filling level
- controlled heating with overheating safeguard of the waterbath
- heat exchanger with cooling-water connection to reduce the temperature of the waterbath
- digital thermometer with graduation by 1/10 degree divisions to read the temperature of the density liquid

Technical data:

| | |
|-----------------------------|---|
| Housing: | PVC, white |
| Heating: | max. 125W |
| Fluorescent: | fluorescent lamp, 2x 8 W |
| Circulating pump: | 35 W |
| Tempering medium: | distilled water |
| Density liquid: | Mixture out of 1-bromnaphthalin and 1, 1, 2, 2-tetrabromethan |
| Measuring range: | approx. 1,5 bis 2,9 g/cm ³ |
| Sample size: | approx. 5 bis 10 mm edge length |
| Power supply: | 230 V / 50 Hz or 115 V / 60 Hz (optional) |
| Ambient temperature: | approx. 20 bis 30°C |

Dimensions: 230mm depth, 420mm width, 370mm height
Weight: approx. 12kg
Order details:
Order No. MDT-1.0
